

THE EVERYONE COLLECTION

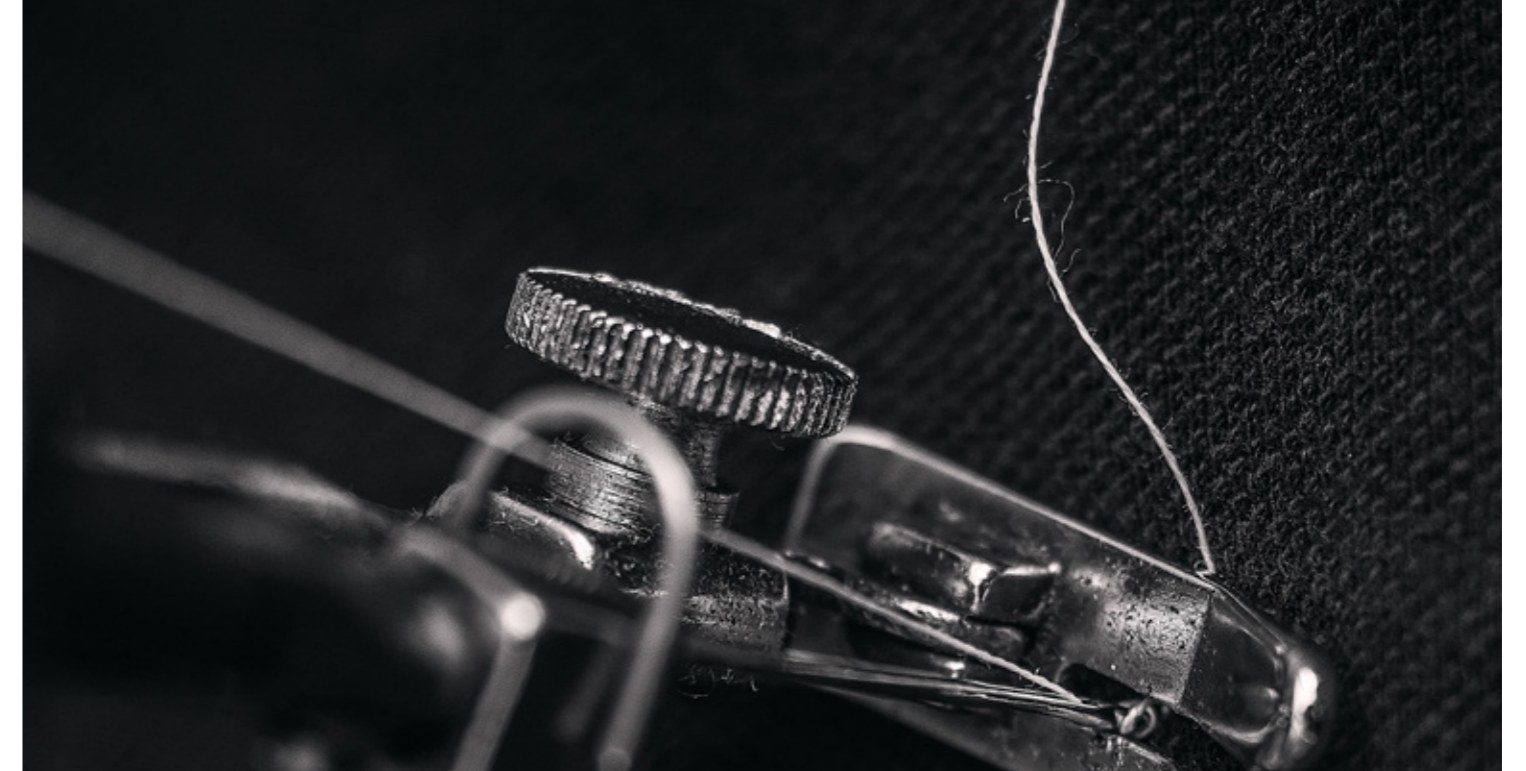
Tailored for Everyday,
Everywhere and Everyone

 CLUBCLASS



EVERY
SUIT
CONTAINS
45
RECYCLED
PLASTIC
BOTTLES

CLUBCLASS



CORPORATE CLOTHING THAT DOESN'T COST THE EARTH

The polyester used in our collections is made from recycled plastic bottles

That means by wearing Clubclass Corporate Clothing you are preventing plastic bottles reaching our oceans and landfill.

Yet we don't want to stop there. We have a world class supply chain team and we're constantly looking at fabric innovation to improve the sustainability of our garments.

As a company we adhere to several internationally recognised industry standards.





TAILORING BUILT TO LAST

The quality and dimensions of the interlining and canvas, developed by our in house technician adds shape that performs day in day out even in the most demanding roles.

The quality of the construction in each garment enables supreme reliability. Each component that we use is tested extensively. We select only the finest fabrics and then ensure they reach a minimum standard for abrasion and pilling.

6 collections each with a specific job to do. All collections offer classic and fashionable styles and slim, tailored and classic fits to clothe diverse teams.

CLUBCLASS



Finchley Ladies Jacket
Navy

Chiswick Slim Fit Trousers
Navy

EVERYONE THE EVERYDAY, EVERYWHERE COLLECTION

This superb one way stretch fabric is designed to be worn every day, everywhere by everyone. It is truly durable and a popular choice for a wide range of industries.

Fabric Composition

69 % Recycled Polyester
29 % Viscose
2 % Lycra Weft Stretch

315 Grams
Per Linear Metre

3 Colours Available

Black
Charcoal
Navy

How the fabric performs

- ✔ 1 Way Stretch Fabric
- ✔ Comfortable
- ✔ Sustainability
- ✔ Durable
- ✔ Easy to wash and look after



THE EVERYDAY, EVERYWHERE COLLECTION

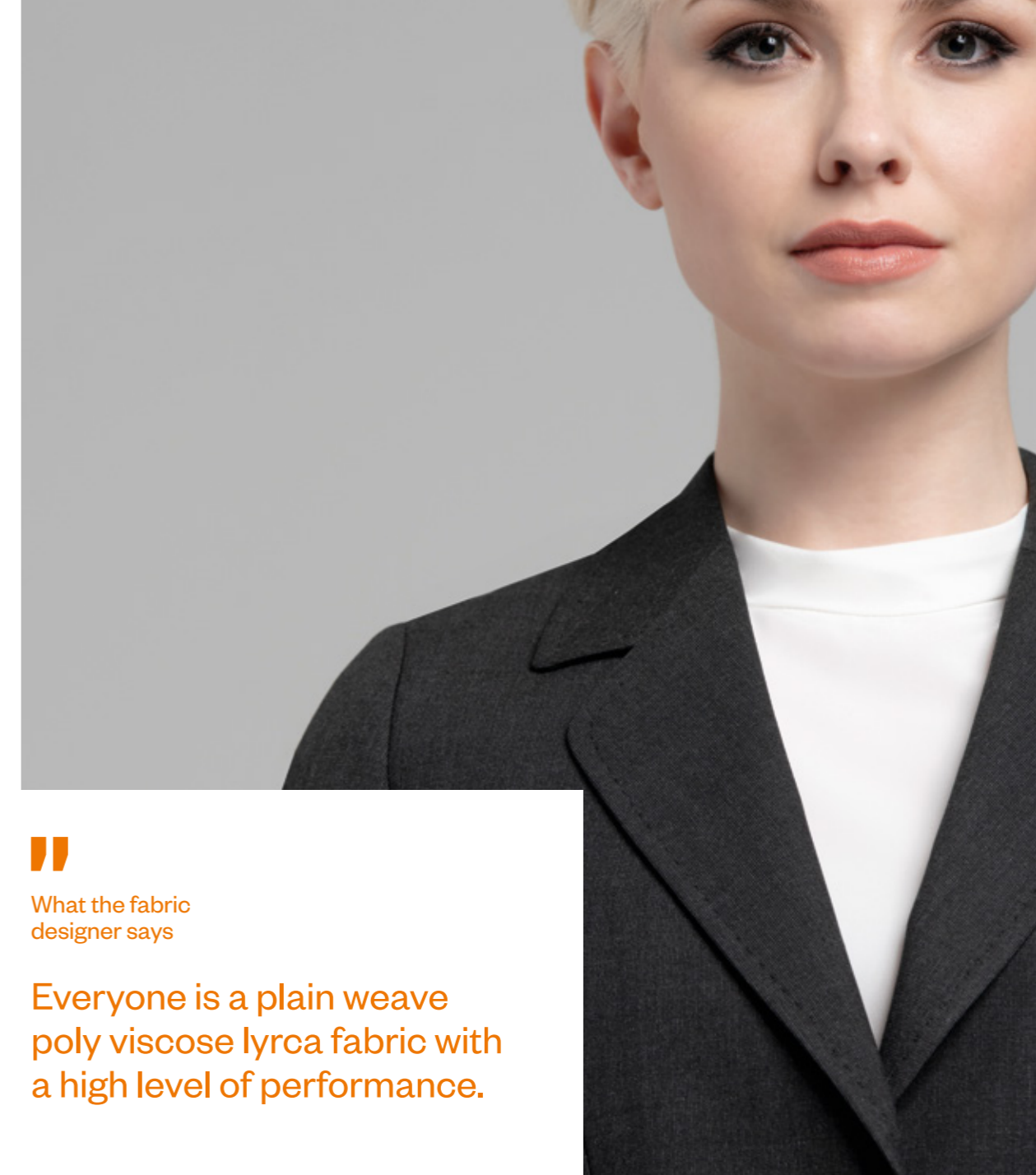
EVERYONE



Images Above
Aldgate Slim Fit Jacket
Navy

Farringdon Mens Jacket Detail
Charcoal

Images Left
Primrose Dress
Charcoal



What the fabric designer says

Everyone is a plain weave poly viscose lycra fabric with a high level of performance.

Worn everyday by

- ☑ Hospitality Leisure and Airlines
- ☑ Bus, Rail and Road
- ☑ Office and Retail
- ☑ Events and Promotion
- ☑ Ceremonial
- ☑ Academy and Sixth Form
- ☑ Facilities Management

Tested to perfection

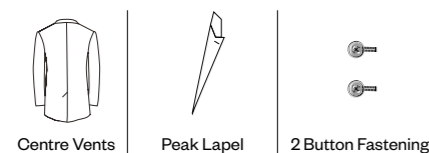
Durability	145,000 + Rubs on the Martindale test
Pilling	Grade 4/5
Fabric meets	Oeko-Tex standard 100

EVERYONE MENS JACKETS



Aldgate Slim Fit Jacket

Cut close to the body for a slim silhouette, it is fitted through the shoulder, chest and waist.



Charcoal J1001C	Black J1001B	Navy J1001N
---------------------------	------------------------	-----------------------

Lengths Available Short Reg Long	UK SIZES 32 - 46	EU SIZES 42 - 56
--	----------------------------	----------------------------



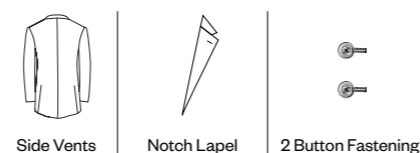
Wear with

This Jacket is designed to sit with the **Edgwear Slim Fit Trousers**



Farrington Tailored Fit Jacket

The regular fit has a tailored fit yet still allowing for ease of movement and comfort throughout the working day.



Charcoal J1000C	Black J1000B	Navy J1000N
---------------------------	------------------------	-----------------------

Lengths Available Short Reg Long	UK SIZES 34 - 50 Short 34 - 54 Reg 36 - 50 Long	EU SIZES 44 - 60 Short 44 - 64 Reg 46 - 60 Long
--	---	---



Wear with

This Jacket is designed to sit with the **Harrow and the Putney Tailored Fit Trousers**



Borough Waistcoat

Designed to create a classic silhouette, the waistcoat comes in a generous fit allowing for comfort and ease of movement.



Charcoal W1004C	Black W1004B	Navy W1004N
---------------------------	------------------------	-----------------------

Lengths Available Regular	UK SIZES 34 - 54	EU SIZES 44 - 64
-------------------------------------	----------------------------	----------------------------



Wear with

This Waistcoat is designed to sit with any trousers from the **Everyone Collection**



Create your own Style

If you are looking for a completely bespoke look, we understand the dynamics of your brief from the fabric, raw materials, design, sampling, manufacturing, environmental impacts and quality assurance through to the necessity of timely logistics.

We can create your full look from shirts to soft shells, knitwear to coats - saving you time and money by using one supplier to manage the whole process.

Contact us to find out more about our [Minimum Order Quantities](#)

	Size Guide
Short	Men under 5'6" tall
Regular	Men between 5'7" & 6'1" tall
Long	Men over 6'1" tall

	Samples
	Order a fabric swatch to feel the fabric quality

EVERYONE
MENS TROUSERS



Edgware
Slim Fit Trousers

These flat fronted slim fit trousers will give you definition as they sit close to your legs with a tapering effect.



Charcoal T1003C **Black** T1003B **Navy** T1003N

Lengths Available	UK SIZES	EU SIZES
Short	28 - 40	44 - 56
Regular	28 - 42	44 - 58
Long	28 - 40	44 - 56
Un Finished	28 - 42	44 - 58



Harrow
Tailored Fit Trousers

Cut with a little extra room at the seat and a neatly tapered leg. These flat fronted trousers provide definition without the restriction.



Charcoal T1002C **Black** T1002B **Navy** T1002N

Lengths Available	UK SIZES	EU SIZES
Short	28 - 50	44 - 66
Regular	28 - 50	44 - 66
Long	28 - 50	44 - 66
Un Finished	28 - 50	44 - 66



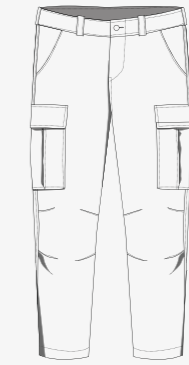
Putney Easy Waist
Tailored Fit Trousers

Exactly the same as the Harrow trouser yet a discreet elastic insert is fitted to the waistband to give waist ease while retaining a formal appearance.



Charcoal T2012C **Black** T2012B **Navy** T2012N

Lengths Available	UK SIZES	EU SIZES
Short	28 - 50	44 - 66
Regular	28 - 50	44 - 66
Long	28 - 50	44 - 66
Un Finished	28 - 50	44 - 66



Create your own Style

If you are looking for a completely bespoke look, we understand the dynamics of your brief from the fabric, raw materials, design, sampling, manufacturing, environmental impacts and quality assurance through to the necessity of timely logistics.

We can create your full look from shirts to soft shells, knitwear to coats - saving you time and money by using one supplier to manage the whole process.

Contact us to find out more about our [Minimum Order Quantities](#)

Inside Leg Measurements		
Short	29"IL	74 ^{CM}
Regular	31"IL	79 ^{CM}
Long	33"IL	84 ^{CM}
Un Finished	37"IL	94 ^{CM}

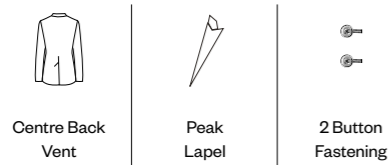


EVERYONE
LADIES JACKETS



Finchley
Tailored Fit Jacket

Tailored to perfection, the jacket features peak lapels and elegant waist-cinching darts.



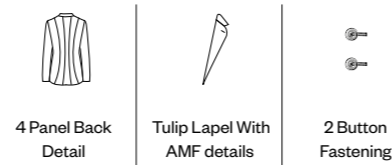
Charcoal J2001C	Black J2001B	Navy J2001N
---------------------------	------------------------	-----------------------

Lengths Available	UK SIZES	EU SIZES
Petite Reg Long	4 - 20 Petite 4 - 24 Reg 6 - 24 Long	32 - 48 Petite 32 - 52 Reg 34 - 52 Long



Bloomsbury
Tailored Fit Jacket

Create a smart silhouette in an instant with this single-breasted tailored jacket, with 4 panel back detailing designed to flatter the waist.



Charcoal J2000C	Black J2000B	Navy J2000N
---------------------------	------------------------	-----------------------

Lengths Available	UK SIZES	EU SIZES
Petite Reg Long	4 - 20 Petite 4 - 24 Reg 6 - 24 Long	32 - 48 Petite 32 - 52 Reg 34 - 52 Long



Poplar
Waistcoat

Designed to create a classic yet flattering silhouette, allowing for comfort and ease of movement throughout the working day.



Charcoal V2007C	Black V2007B	Navy V2007N
---------------------------	------------------------	-----------------------

Lengths Available	UK SIZES	EU SIZES
Regular	4 - 24	32 - 52



Create your own Style

If you are looking for a completely bespoke look, we understand the dynamics of your brief from the fabric, raw materials, design, sampling, manufacturing, environmental impacts and quality assurance through to the necessity of timely logistics.

We can create your full look from shirts to soft shells, knitwear to coats - saving you time and money by using one supplier to manage the whole process.

Contact us to find out more about our [Minimum Order Quantities](#)



Size Guide

Petite Women under 5'2" tall
Regular Women between 5'3" & 5'9" tall
Long Women over 5'10" tall



Samples

Order a fabric swatch to feel the fabric quality



Wear with

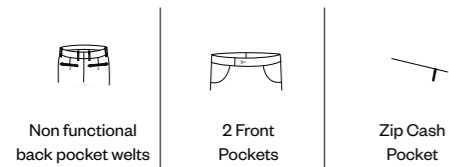
All ladies jackets & waistcoats are designed to work with the all the Everyone trousers, dresses and skirts.

EVERYONE
LADIES TROUSERS



Chiswick Slim Fit Trousers

These slim fit trousers will give you beautiful definition as they sit close to your legs flattering your shape.



Charcoal T2011C **Black** T2011B **Navy** T2011N

Lengths Available **UK SIZES** **EU SIZES**
Petite | Reg | Long | Unfinished 4 - 24 32 - 52



Maidavale Tailored Fit Trousers

Cut with a little extra room around the top of the leg and a neatly tapered leg to elongate the leg length.



Charcoal T2004C **Black** T2004B **Navy** T2004N

Lengths Available **UK SIZES** **EU SIZES**
Petite | Reg | Long | Unfinished 4 - 24 32 - 52



Finsbury Classic Fit Trousers

A flattering straight-leg trouser in a wearable comfortable classic fit with a mid rise.



Charcoal T2003C **Black** T2003B **Navy** T2003N

Lengths Available **UK SIZES** **EU SIZES**
Petite | Reg | Long | Unfinished 4 - 24 32 - 52



Create your own Style

If you are looking for a completely bespoke look, we understand the dynamics of your brief from the fabric, raw materials, design, sampling, manufacturing, environmental impacts and quality assurance through to the necessity of timely logistics.

We can create your full look from shirts to soft shells, knitwear to coats - saving you time and money by using one supplier to manage the whole process.

[Contact us to find out more about our Minimum Order Quantities](#)

Size Guide

Petite	Women under 5'2" tall
Regular	Women between 5'3" & 5'9" tall
Long	Women over 5'10" tall

Samples

Order a fabric swatch to feel the fabric quality

Wear with

All ladies trousers are designed to work with the all the Everyone jackets and waistcoats.

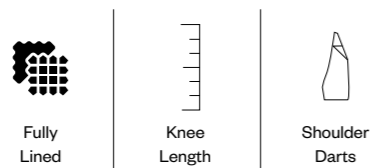
Hem widths shows are based on a size 8

EVERYONE
LADIES DRESSES & SKIRTS



Primrose
Shoulder Dart Dress

A fitted style with elegant waist-cinching darts designed to flatter any figure.



Charcoal D2008C **Black** D2008B **Navy** D2008N

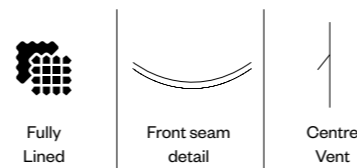
Lengths Available
Regular **UK SIZES** **EU SIZES**
 4 - 24 32 - 52



Handy
Key Loop

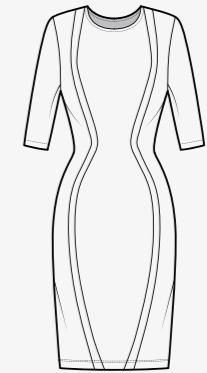
Holborn
Pencil Skirt

The classic formal skirt remains a true hero piece. Shaped with a figure skimming fit, this chic skirt sits just above the knee.



Charcoal S2006C **Black** S2006B **Navy** S2006N

Lengths Available
Reg | Long **UK SIZES** **EU SIZES**
Regular (58cm | 23" length) 4 - 24 32 - 52
Long (64cm | 25" length)



Create your own Style

If you are looking for a completely bespoke look, we understand the dynamics of your brief from the fabric, raw materials, design, sampling, manufacturing, environmental impacts and quality assurance through to the necessity of timely logistics.

We can create your full look from shirts to soft shells, knitwear to coats - saving you time and money by using one supplier to manage the whole process.

[Contact us to find out more about our Minimum Order Quantities](#)



Size Guide

Petite Women under 5'2" tall
Regular Women between 5'3" & 5'9" tall
Long Women over 5'10" tall



Samples

Order a fabric swatch to feel the fabric quality



Wear with

All ladies dresses & skirts are designed to work with the all the Everyone jackets



EASY CARE

Every garment is engineered to be washable in domestic washing machines

Every garment is engineered to withstand creasing and shine. We've spent years testing and trialling this garment so that your garment will last longer and look better if you follow the simple care guide.

All pieces are washable in a domestic machine. If wash instructions are followed correctly a minimum iron will restore the clothing to great shape.



Wash separately.
Machine wash as wool.
Do not use fabric softener.



Remove the garment immediately after the wash and pull gently into shape. Place on a hanger and allow to dry naturally.



If required iron on a medium setting using a damp cloth between the iron & the garment to prevent shine.



Do not tumble dry.

 CLUBCLASS

clubclasscorporatewear.co.uk

Stuncroft